

# TRUE GAIN ANTENNAS

All The Signal...®

## IMPORTANT:

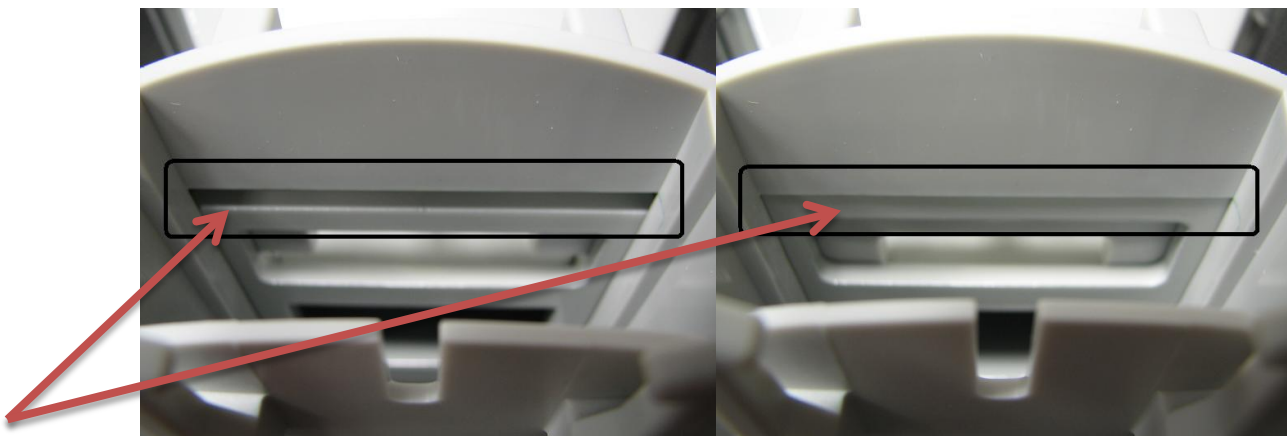
Due to the narrowed beam angle, the Canopy radio must be aimed for peak signal with the TG-CH5000-10 antenna installed (or re-aimed if the radio had been previously installed).

The Canopy Mount is used to mount the TG-CH5000-10 Antenna to the Canopy radio for increased antenna gain and extended range. The TG-CH5000-10 antenna must be ordered to match the polarization of the Canopy radio. A typical vertically-polarized TG-CH5000-10 is shown to the right. The larger rectangular opening is rotated 90° for horizontal polarization but the two antenna otherwise appear much the same and are assembled to the Canopy radio using the Canopy radio mount as follows.

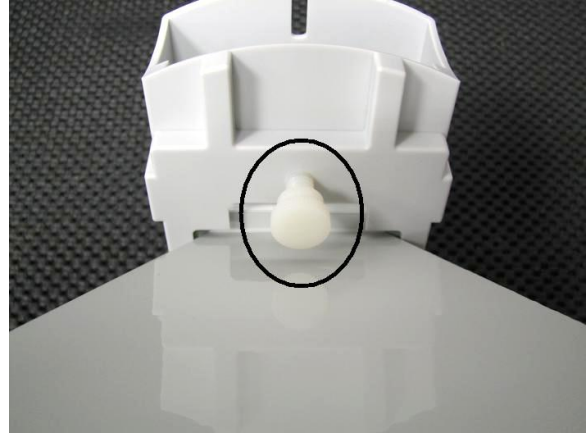


## ASSEMBLY INSTRUCTIONS

1. Slip the antenna flange into the slot in the mount as shown at right. The flange may be a tight fit.
2. Continue pushing the antenna into the mount until the open area in the flange is completely seated, as shown below. Note, in the below left image, the exposed open area while the right image shows the flange having been fully seated.



3. Holding the antenna into the mount, tighten the thumbscrew in the mount onto the antenna's flange as shown at right.



4. The TG-CH5000-10 and Canopy mount can now be installed onto the radio.

Slip the open end of the mount over the radio and press the antenna assembly down until the clips on the back of the mount snap over the Canopy radio's mast mounting brackets, as shown below.



5. With the TG-CH5000-10 antenna installed, aim with the Canopy radio for peak signal.